

- UTILITY REQUIREMENTS
- (CW) — COLD WATER - (2) @ 1/2" NPT
  - (HW) — HOT WATER - (2) @ 1/2" NPT
  - (D) — DRAIN - (2) @ 1-1/2" NPT
  - (DI) — DEIONIZED WATER - 3/8" or 1/4" NPT (FLEX LINE BY OTHERS)
  - (E) — ELECTRICAL - 115 V., 1 PH., 60 Hz., 15 AMP

**FOR APPROVAL ONLY**

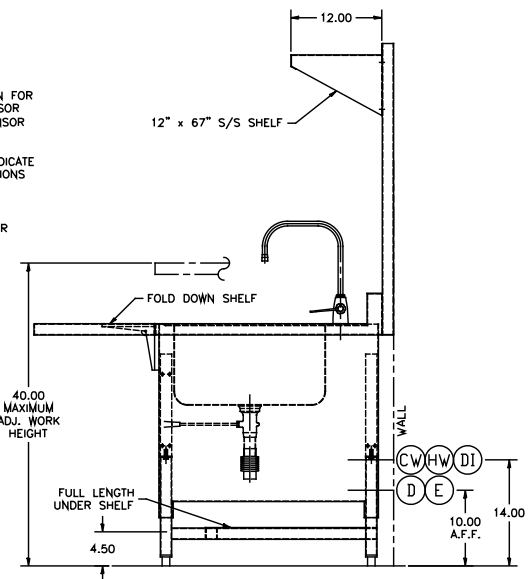
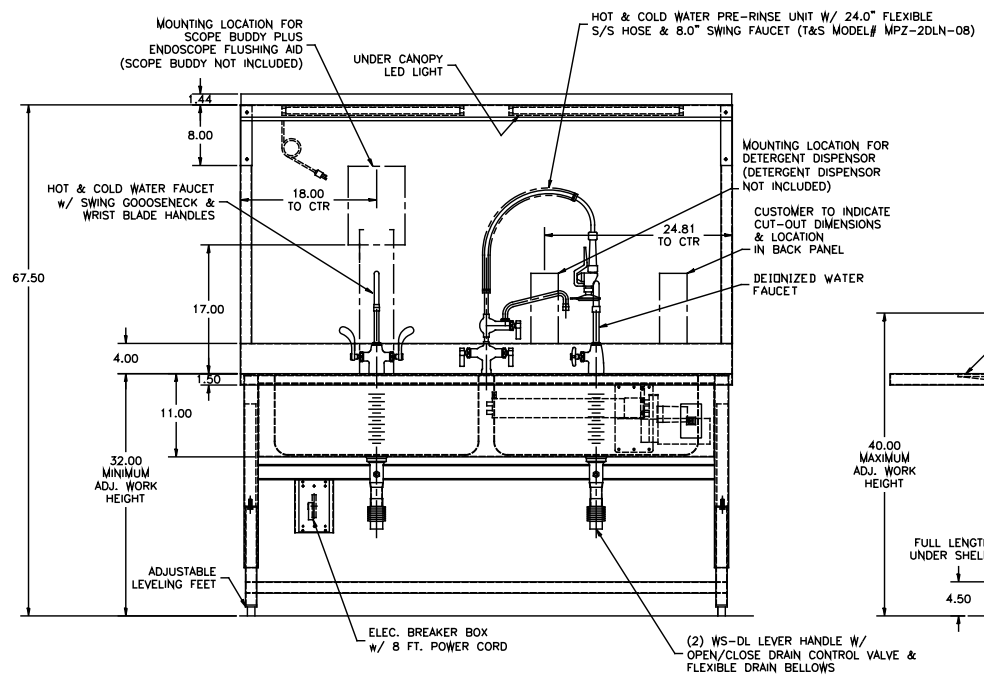
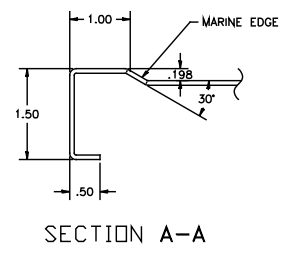
ONE (1) SET OF APPROVAL PRINTS MUST BE SIGNED AND RETURNED TO T&J INC. BEFORE EQUIPMENT CAN BE RELEASED FOR PRODUCTION

APPROVED AS DRAWN FOR FABRICATION

NOT APPROVED - REVISE & RESUBMIT FOR FINAL APPROVAL

SIGNED \_\_\_\_\_

DATE \_\_\_\_\_



UNLESS OTHERWISE SPECIFIED		1671 ORCHARD DRIVE	
TOLERANCES IN INCHES:		CHAMBERSBURG, PA 17201	
FRACTIONAL ± 1/32		Phone: (717) 261-9700 #WWW.T&JINC.COM	
ANGULAR ± 0.25°		SCALE NTS	
ONE DECIMAL ± 0.063		REF DWG - R18066	
TWO DECIMAL ± 0.031		DRAWN BY LCB	
THREE DECIMAL ± 0.015		DATE 7/25/22	
NAME	DATE	30-65-2B WS-AH WORK SINK	
PROD. RELEASE SMH	12/14/22	ROUGH-IN ASSEMBLY	
APPR. RELEASE JI	12/8/22	R22194	
REVIEWED BY			
ENG APPR.			