

**FOR APPROVAL ONLY**

ONE (1) SET OF APPROVAL PRINTS  
MUST BE SIGNED AND RETURNED TO  
TBJ INC. BEFORE EQUIPMENT  
CAN BE RELEASED FOR PRODUCTION

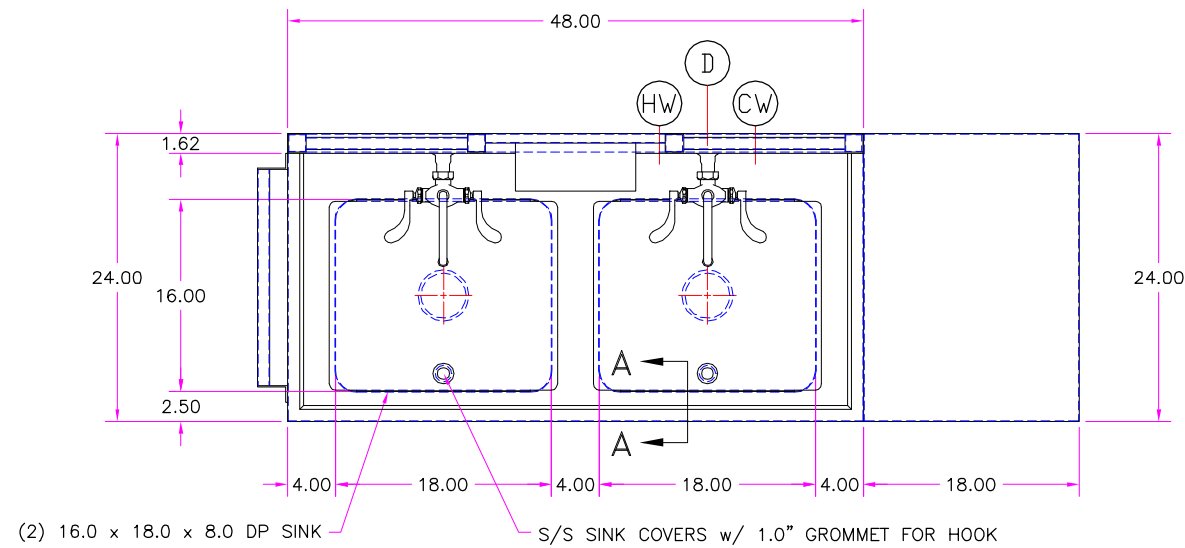
- APPROVED AS DRAWN  
FOR FABRICATION
- NOT APPROVED - REVISE &  
RESUBMIT FOR FINAL APPROVAL

SIGNED \_\_\_\_\_

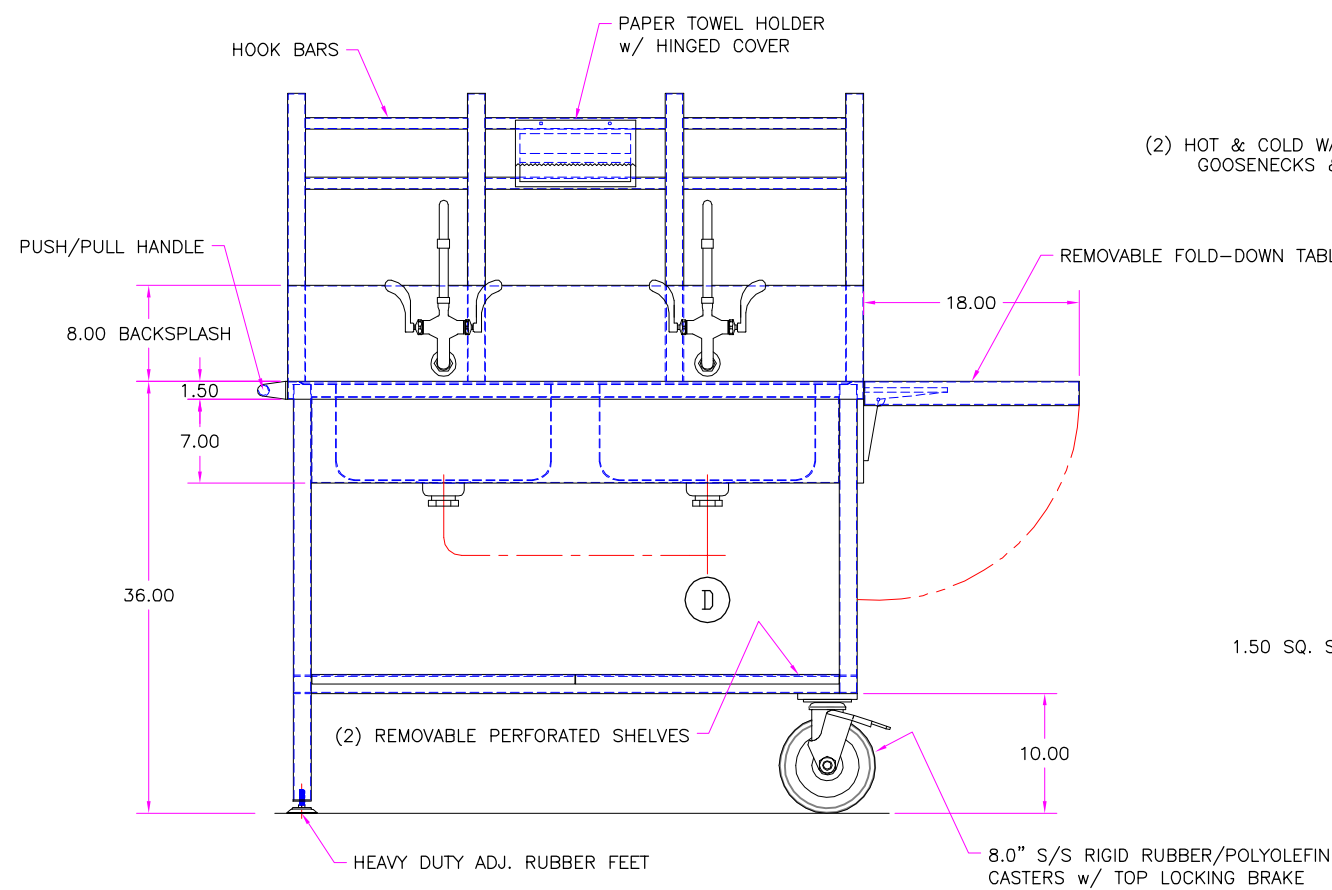
DATE \_\_\_\_\_

UTILITY REQUIREMENTS

- (CW)** — COLD WATER — (1) @ 3/4" NPT
- (HW)** — HOT WATER — (1) @ 3/4" NPT
- (D)** — DRAIN — (1) @ 1 1/2" NPT

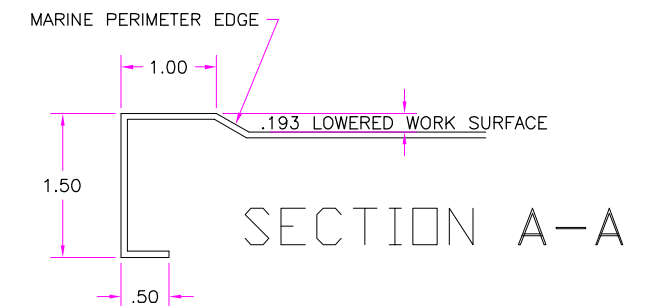
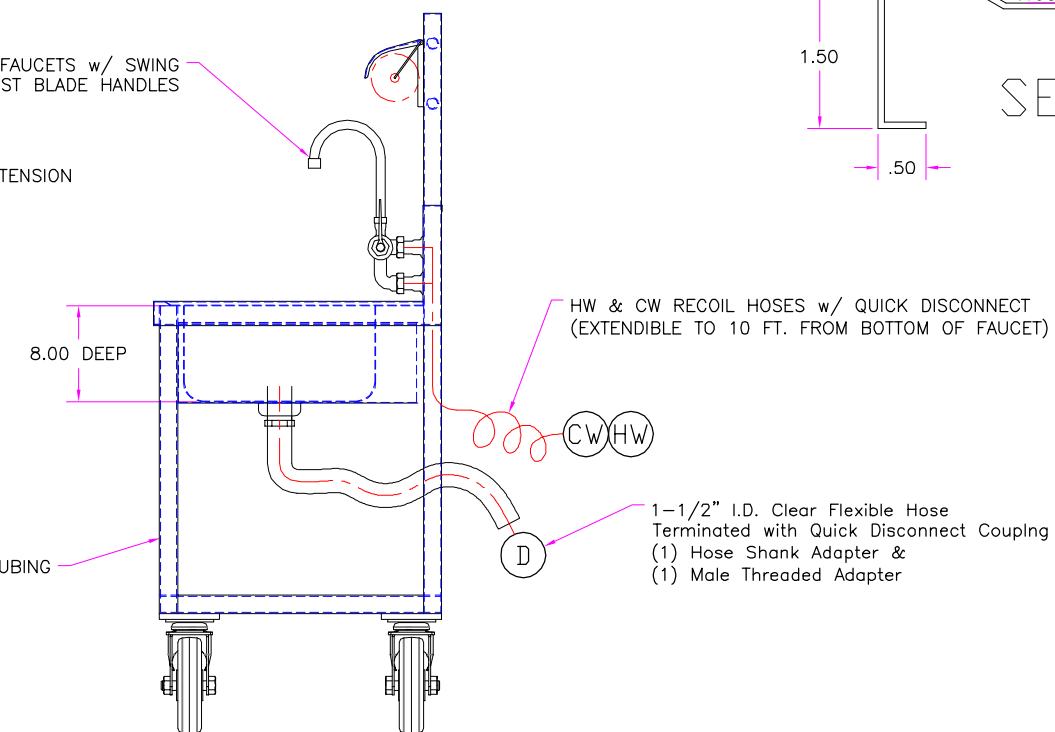


(2) 16.0 x 18.0 x 8.0 DP SINK  
S/S SINK COVERS w/ 1.0" GROMMET FOR HOOK



(2) HOT & COLD WATER FAUCETS w/ SWING  
GOOSENECKS & WRIST BLADE HANDLES

1.50 SQ. S/S TUBING



UNLESS OTHERWISE SPECIFIED		-	-	-	-
TOLERANCES IN INCHES: FRACTIONAL ± 1/32 ANGULAR ± 0°25' ONE DECIMAL ± 0.063 TWO DECIMAL ± 0.031 THREE DECIMAL ± 0.015		LET	REVISION	BY	DATE
		<b>TBJ</b> INCORPORATED 1671 ORCHARD DRIVE CHAMBERSBURG, PA 17201 Phone: (717) 261-9700 www.tbjinc.com			
		SCALE 1-1/2"=1'-0"	DRAWN BY ALE		
		REF DWG -	DATE 3-9-21		
PROD. RELEASE	-	TBJ MODEL 24-48-2B-M - MOBILE WORK SINK			
APPR. RELEASE	-	ROUGH-IN ASSEMBLY		R21065	
REVIEWED BY					
ENG APPR.					