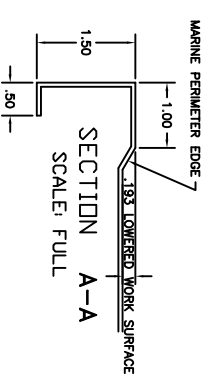


- UTILITY REQUIREMENTS**
- (CW) COLD WATER - (5) 1/2" NPT (FLEX LINE BY OTHERS)
 - (HW) HOT WATER - (4) 1/2" NPT (FLEX LINE BY OTHERS)
 - (CA) COMPRESSED AIR - (1) 3/4" NPT (FLEX LINE BY OTHERS)
 - (D) DRAIN - (4) 1-1/2" NPT
 - (E) ELECTRICAL - (2) 'E1, E2' - 115 V., 1 PH., 60 Hz., 15 AMP (3-PRONG GROUNDED PLUG)



FOR APPROVAL ONLY

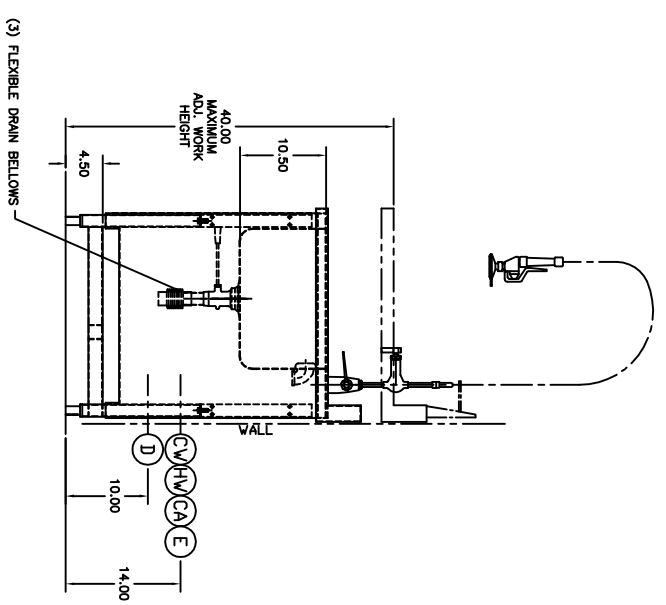
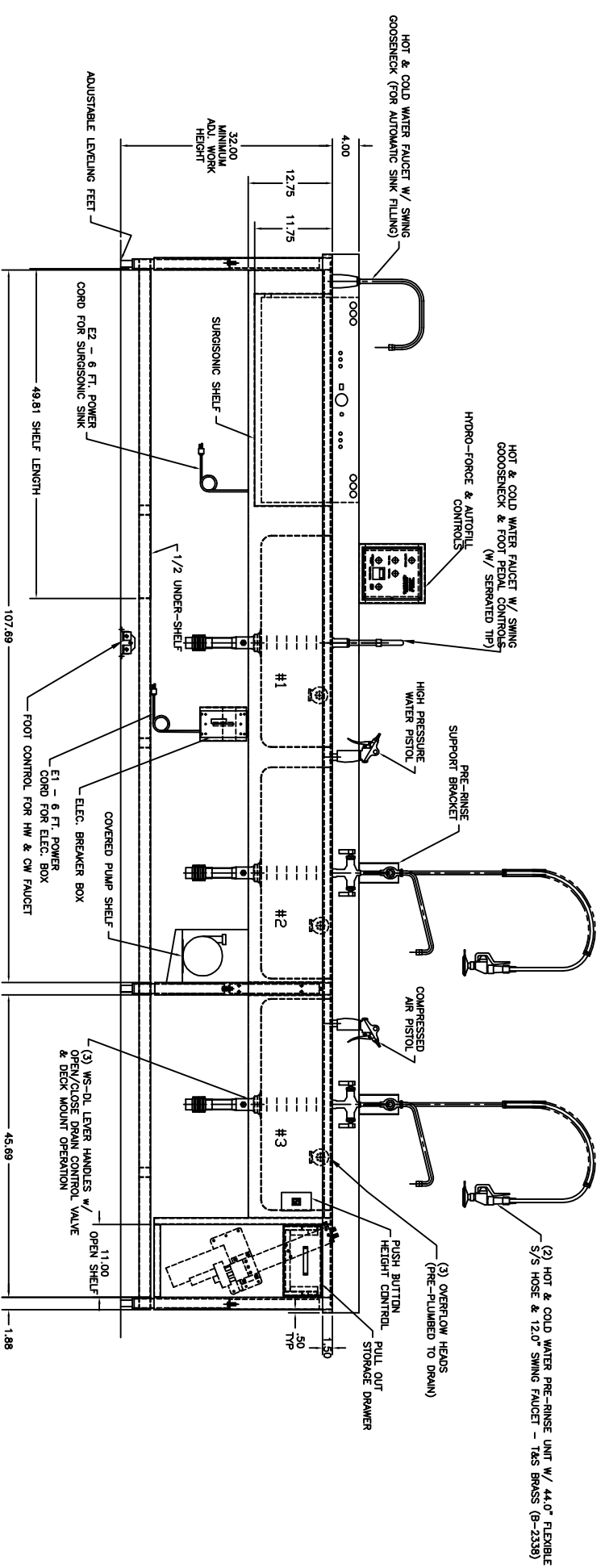
ONE (1) SET OF APPROVAL PRINTS MUST BE SIGNED AND DATED BY THE DESIGNER BEFORE EQUIPMENT CAN BE RELEASED FOR PRODUCTION

APPROVED AS DRAWN

NOT APPROVED - REVISE & RESUBMIT FOR FINAL APPROVAL

SIGNED _____

DATE _____



NOTES: 1) MAX. OVERALL DIMENSIONS MUST BE CONSIDERED FOR BUILDING ENTRY.

UNLESS OTHERWISE SPECIFIED		LET	REVISION	BY	DATE
TOLERANCES IN INCHES:					
FRACTIONAL ± 1/32					
ANGULAR ± 0.75°					
ONE DECIMAL ± 0.063					
TWO DECIMAL ± 0.031					
THREE DECIMAL ± 0.015					
NAME	DATE				
PROJ. RELEASE					
APPR. RELEASE					
REVIEWED BY					
ENG APPR.					
SCALE 1'-1/4" = 1'-0"		REF. DWG - R15025	DRAWN BY SMH	DATE 9-14-16	
26-160-4B WS-AH WORK SINK		R16170			
ROUGH-IN ASSEMBLY		R16170			

1671 ORCHARD DRIVE
 CHAMBERSBURG, PA 17201
 INCORPORATED Phone: (717) 261-9700 www.tbjinc.com
 SCALE 1'-1/4" = 1'-0" DRAWN BY SMH DATE 9-14-16