

UTILITY REQUIREMENTS

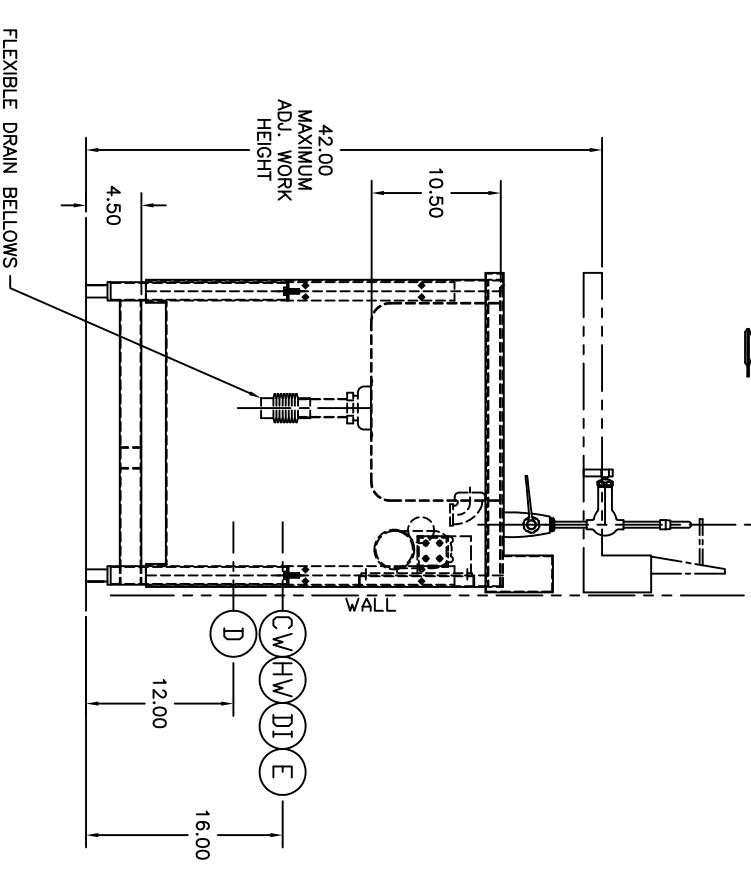
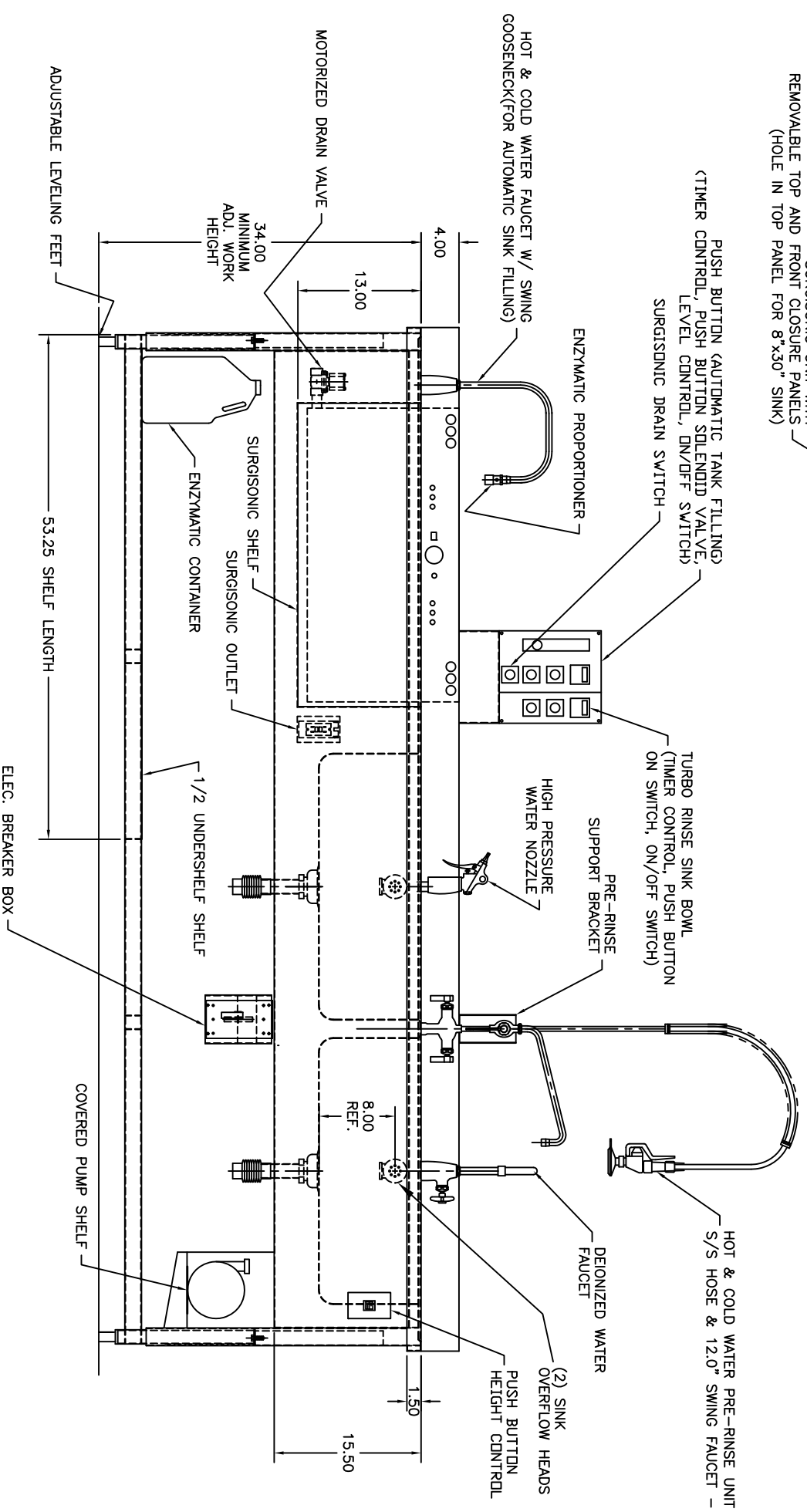
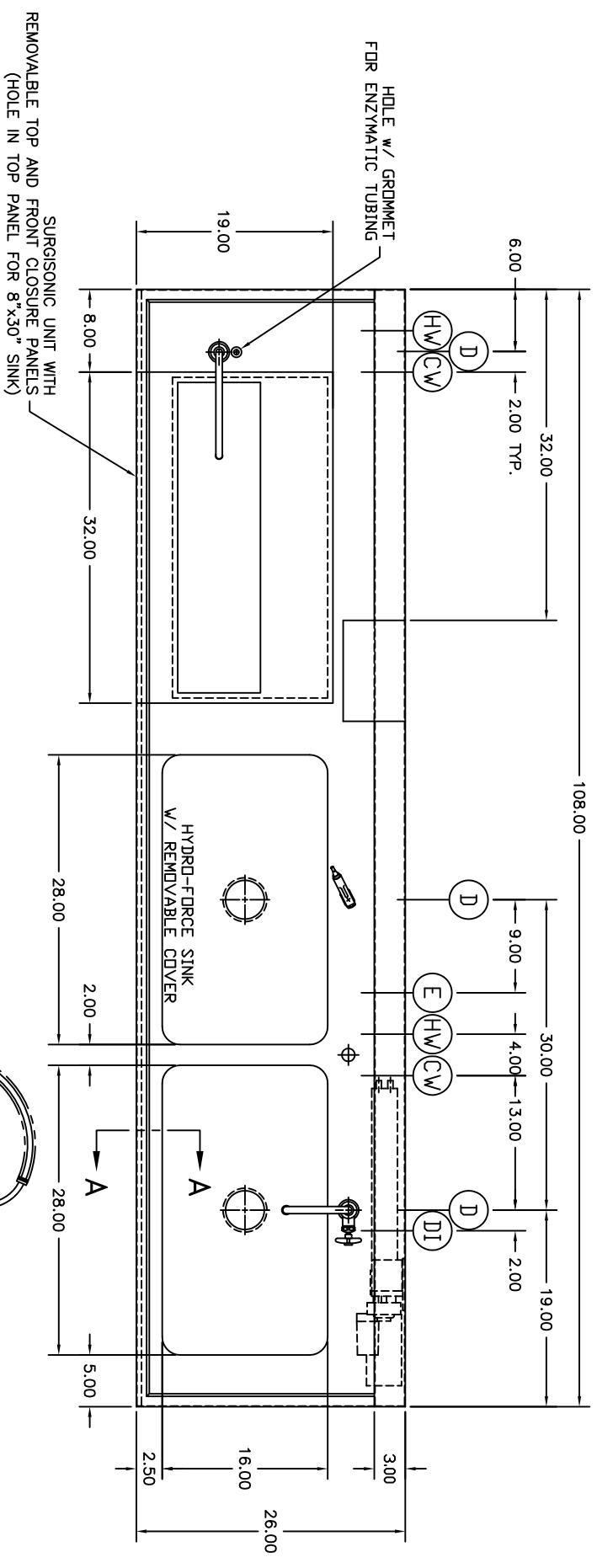
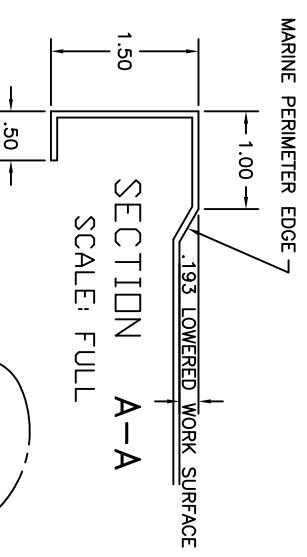
- CW — COLD WATER - (2) 1/2" N.P.T. (FLEX LINE BY OTHERS)
- HW — HOT WATER - (2) 1/2" N.P.T. (FLEX LINE BY OTHERS)
- DI — DEIONIZED WATER - 1/2" NPT (FLEX LINE BY OTHERS)
- D — DRAIN - (3) 1-1/2" N.P.T.
- E — ELECTRICAL - 115 V., 1 PH., 60 HZ., 15 AMP

FOR APPROVAL ONLY

ONE (1) SET OF APPROVAL PRINTS MUST BE SIGNED AND RETURNED TO TBJ INC. BEFORE EQUIPMENT CAN BE RELEASED FOR PRODUCTION

- APPROVED AS DRAWN
- FOR FABRICATION
- NOT APPROVED — REVISE & RESUBMIT FOR FINAL APPROVAL

SIGNED _____
DATE _____



NOTES: 1) MAX. OVERALL DIMENSIONS MUST BE CONSIDERED FOR BUILDING ENTRY.

NOTE: THERMOSTATIC MIXING VALVES TO BE INCLUDED

UNLESS OTHERWISE SPECIFIED		A	
TOLERANCES IN INCHES:		ADD MOTORIZED DRAIN, PROPORTIONER VALVE & DETAILS	
FRACTIONAL ± 1/32		LET	
ANGULAR ± 0.25°		REVISION	
ONE DECIMAL ± 0.063		BY	
TWO DECIMAL ± 0.031		DATE	
THREE DECIMAL ± 0.015		NCS 3-5-15	
NAME		DATE	
DATE		DATE	
PROJ. RELEASE	NAME	DATE	DATE
APPR. RELEASE	NAME	DATE	DATE
REVISED BY	NAME	DATE	DATE
ENG. APPR.	NAME	DATE	DATE
SCALE: 1-1/2"=1'-0" STK-789			
SCALE: 1-1/2"=1'-0"		DRAWN BY: BAB	
REF. DWG - R13068		DATE: 2-17-15	
MODEL 36-108 WS-AH WORK SINK			
ROUGH-IN ASSEMBLY			
R15025			