

TBJ Model 30-96-3B-CWS-AH-PP Triple Bowl Work Sink (ref. dwg. R19208)

Product Specification

Product Description

The TBJ Model 30-96-3B-CWS-AH-PP work sink is specifically designed for use in hospital sterile processing departments for the pre-cleaning of grossly soiled surgical instruments, utensils, endoscopes and other miscellaneous items prior to automated washing/disinfection cycles. The unit includes two sink bowls. The work sink shall have the following configuration and features:

- (3) 24" x 18" x 10" deep sink bowls with ergonomic slanted wrist edges on the front side of sink bowls.
- (1) panel-mounted hot/cold faucet with wrist blade handles and pre-rinse sprayer shall be located between 1st and 2nd sink bowl
- (1) panel mounted hot/cold water faucet mounted between 2nd and 3rd sink bowl
- (1) panel mounted DI water faucet
- The ergonomic, electrically operated hydraulic lift system allows the sink height to be adjusted from 32" to 43" high via a push-button control switch.
- (1) bottle holder and (2) wire baskets
- (3) lever handle drain controls for remote sink draining
- 24" H x 96" wide stainless steel pegboard back panel with bin and basket hanging system.
- Overhead canopy with shelf and LED lighting
- Flexible gooseneck LED light inspection light with magnifier.
- Storage shelf below sink top.

Construction/Design

- Heavy duty stainless steel construction
- Type 304 stainless steel sink top, 14 gauge, #4 finish
- Type 304 stainless steel tubular base frame made of 1 1/2" square x 16 gauge wall tubing
- Adjustable leveling feet
- Seamless heliarc welded construction
- All exposed welds ground and polished
- 4" high backsplash with sloped top
- NSF approved 14 gauge sink bowls with cove corners
- 1/8" high marine edge on around front and sides
- Hospital grade, chrome plated brass faucets and fixtures
- Lever handle drain controls
- Sink bowl sizes and overall dimensions can be customized around your specific needs.
- A wide variety of optional features are available to add to the base unit. See partial list of optional features listed below.



Dimensions:

The 30-96-3B-CWS-AH-PP is 30" Wide x 96" long. The ergonomic height adjustment feature allows the sink top to be adjustable between 32" and 43" High. The sink bowls are a spacious 24" Wide x 18" Long x 10" deep and include lever handle drain controls.

Optional Features

Accessories for Peg Board Mounting – Wire baskets, shelving, detergent holders, task lighting, count down timer, keyboard and monitor arms, water temperature gauge and LED lit basin with ON/OFF switch for improved leak test monitoring.

Patented flushing system for robotic and tubular surgical instruments – Includes ultrasonic system with (6) independent pumps with (6) suction chambers and filters. Cleans (6) tubular instruments or (3) daVinci™ instruments simultaneously.

Automatic Sink Bowl Filling System – The auto-fill system includes an ON/OFF switch, timer to pre-set fill duration, a level control sensor and push-button fill control. The system will automatically fill the same volume of water cycle after cycle.

Enzymatic Dosing System – The enzymatic dosing system enables you to pre-program (2) different dosing levels. It includes water temperature monitoring, soak timer and "Check Detergent Supply" alarm when detergent supply is empty..

ELECTRICAL

The sink unit is completely pre-wired to an integral breaker box with a 6-foot hospital grade plug.

Installation and Assembly

TBJ work sinks are shipped fully assembled, for quick and easy setup. Standard and optional fixtures are shipped installed and ready for use after installation of the sink. Fixtures are pre-piped ready for connection to in-house utilities on site.

STERILE PROCESSING WORK SINK OPTIONS



Push-Button
Height Adjustment



Enzymatic Foam
Spray System



Selecta Air &
Water Pistols



Etched Gallon
Markings



Removable Gallon
Marking Indicator



Lever Handle Drains



Foot Pedal Faucet Controls



DI and RO water
Faucets



Hot and cold
spray rinse



Hot/Cold spray rinse
Faucet combination



Custom Sink Bowl Sizes



Self-contained
steam cleaning system



4-outlet tubing flush manifold



Integrated ultrasonic tank



Dual Purpose Ultra-Sonic sink system



Hydro-Force pre-rinse System (vid)



Automatic sink bowl filling system



Heated Sink Bowl system



Recessed, sloped rapid drainage work area



Integrated sonic irrigator



Integrated storage - cabinets and open shelving



Deck mounted eye wash

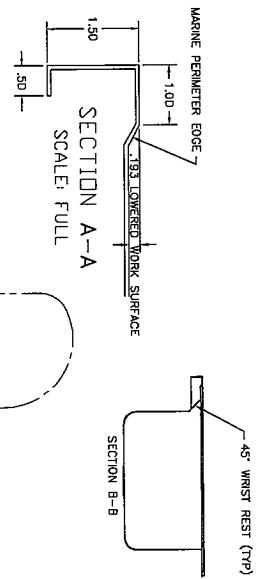
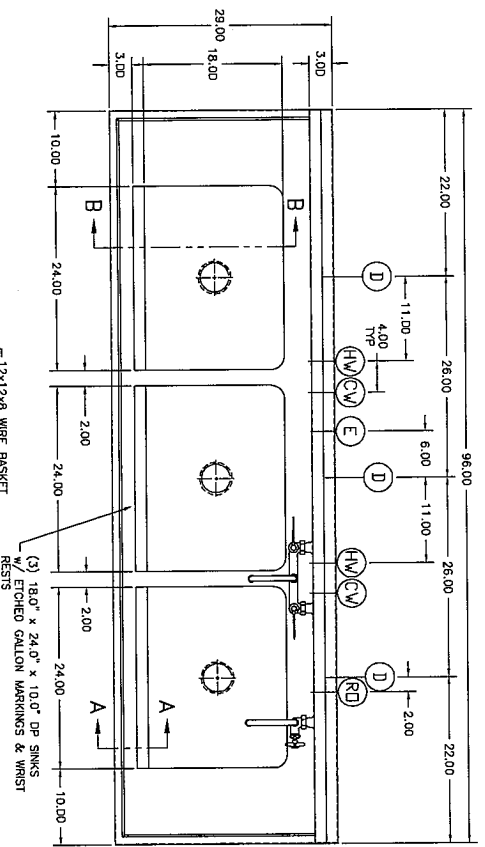


Custom back splashes and side splashes



Full width under shelf

Contact TBJ for a detailed rough-in drawing that is specific to the sink design you are interested in.
TBJ, Inc. | 1671 Orchard Drive, Chambersburg, PA 17201 | Phone 717-261-9700 | Fax 717-261-1730



- UTILITY REQUIREMENTS**
- (CW) COLD WATER - (2) @ 1/2" NPT (FLEX LINE BY OTHERS)
 - (HW) HOT WATER - (2) @ 1/2" NPT (FLEX LINE BY OTHERS)
 - (RO) DEIONIZED WATER - (1) @ 1/2" NPT (FLEX LINE BY OTHERS)
 - (D) DRAIN - (3) @ 1-1/2" NPT (FLEX LINE BY OTHERS)
 - (E) ELECTRICAL - 115 V., 1 PH., 60 HZ., 15 AMP

FOR APPROVAL ONLY

ONE (1) SET OF APPROVAL PRINTS MUST BE SIGNED AND RETURNED TO TBI INC. BEFORE EQUIPMENT CAN BE RELEASED FOR PRODUCTION

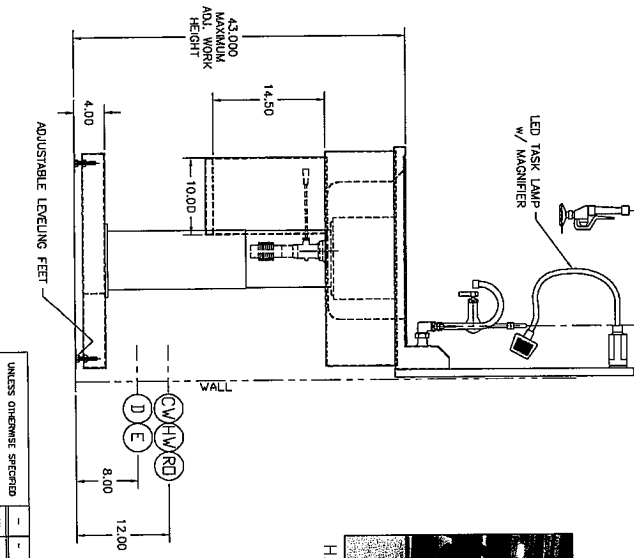
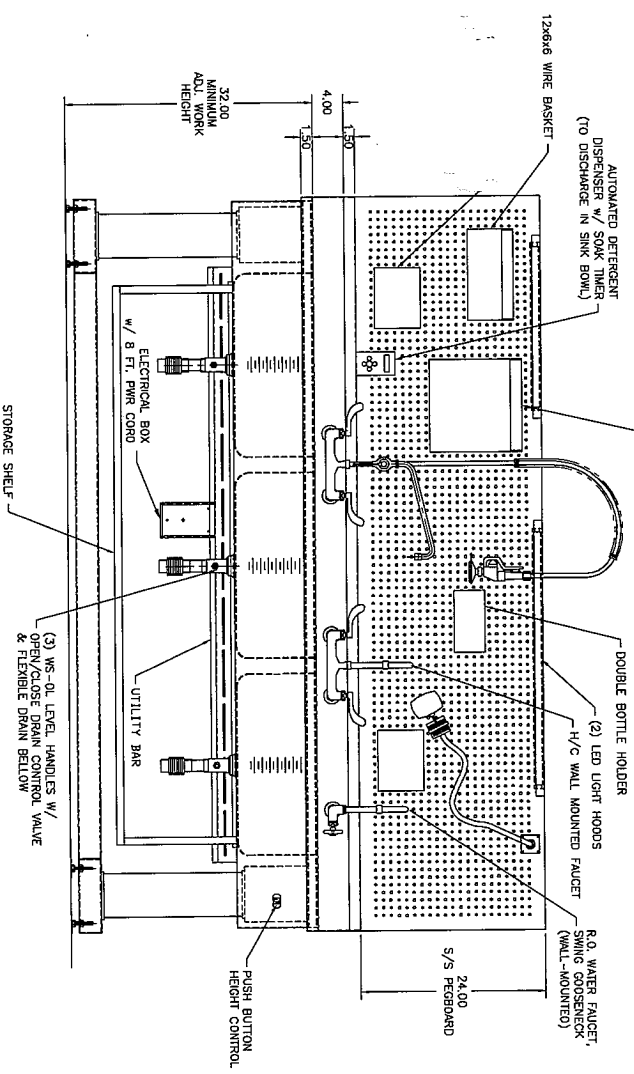
APPROVED AS DRAWN FOR FABRICATION

NOT APPROVED - REVISE & RESUBMIT FOR FINAL APPROVAL

SIGNED _____ DATE _____



H/C VALVE DETAIL



NOTES: 1. MAX. OVERALL DIMENSIONS MUST BE CONSIDERED FOR BUILDING ENTRY.

NOTE:
- INCLUDES (4) BOTTLES OF SURFACE DISINFECTANT (NOT SHOWN)

| | | | |
|-------------------------------------|------------------|-------------------------|--------|
| UNLESS OTHERWISE SPECIFIED | | TOLERANCES IN INCHES: | |
| FRACTIONAL & 1/32 | | FRACTIONAL & 1/32 | |
| DECIMAL & .001 | | DECIMAL & .001 | |
| HOLE DIMENSIONS & .0015 | | HOLE DIMENSIONS & .0015 | |
| PROJ. RELEASE | DATE | NAME | DATE |
| APPR. RELEASE | | | |
| REV. APPROV. | | | |
| REV. Dwg. | DATE | BY | DATE |
| 1671 DRICHARD DRIVE | | | |
| CHAMBERSBURG, PA 17201 | | | |
| PHONE: (717) 261-9700 | | | |
| FAX: (717) 261-9700 | | | |
| WWW.TBIINC.COM | | | |
| SCALE: 1-1/2"=1'-0" | DESIGNED BY: SKH | | |
| | DRAWN BY: SKH | | |
| | DATE: 7-3-19 | | |
| MODEL: 30-96-3B CVS-AH - W/INK SINK | | | |
| ROUGH-IN ASSEMBLY | | | |
| | | | R19208 |