

TBJ Model 30-96-2B-AH SPCS Scope Pre-Cleaning Sink (ref. dwg. R13106)



Product Specification

Product Description

The TBJ Model 30-96-2B SPCS work sink is specifically designed for use in GI Labs and Sterile Processing Departments for the pre-cleaning of flexible endoscopes. The unit includes two sink bowls thus meeting AAMI guidelines for having a minimum of two separate sink basins.....one for manual cleaning and leak testing and one for rinsing of scopes. The work sink shall have the following configuration and features:

- Two 24" x 16" x 12" deep sink bowls
- (1) deck mounted hot/cold faucet with wrist blade handles shall be located between sink bowls..
- Includes the OPTIONAL ergonomic, electrically operated hydraulic lift system allowing the sink height to be adjusted from 34" to 42" high via a rocker switch control can be added to the base unit.
- Includes a 21" wide x 25" high open storage cabinet on the left side of the unit with a slide out storage shelf.
- Includes 26" of counter space on the left side of the sink top and 20" on the right side of the sink top.
- Includes two lever handle drain controls for remote sink draining

Construction/Design

- Heavy duty stainless steel construction
- Type 304 stainless steel sink top, 14 gauge, #4 finish
- Type 304 stainless steel tubular base frame made of 1 1/2" square x 16 gauge wall tubing
- Adjustable leveling feet
- Seamless heliarc welded construction
- All exposed welds ground and polished
- 4" high backsplash extending the length of the sink top
- NSF approved 14 gauge sink bowls with cove corners
- 1/8" high marine edge on around front and sides
- Hospital grade, chrome plated brass faucets and fixtures
- Lever handle drain controls
- Sink bowl sizes and overall dimensions can be customized around your specific needs.
- A wide variety of optional features are available to add to the base unit. See partial list of optional features listed below.



Dimensions:

The 30-96-2B-AH is 30" Wide x 96" long. The included OPTIONAL ergonomic height adjustment feature allows the sink top to be adjustable between 34" and 42" High. The sink bowls are 24" Wide x 16" Long x 12" deep and include lever handle drain controls.

Sink Fixtures

Hot/Cold water faucet – (1) chrome plated, deck mounted hot/cold water faucet with wrist blade handles. Fixtures are pre-piped to threaded valves for ease of connection to building utilities on site.

Available Options (partial list)

Scope Buddy™ Plus Endoscope Flushing Aid – Designed to facilitate the flushing of rinse water, air and detergent solutions through the channels of flexible, immersible endoscopes during the manual cleaning process of endoscope reprocessing prior to the subsequent high-level disinfection or sterilization process.

Automatic Sink Bowl Filling System – The auto-fill system includes an ON/OFF switch, timer to pre-set fill duration, a level control sensor and push-button fill control. The system will automatically fill the same volume of water cycle after cycle.

Enzymatic Dosing System – The enzymatic dosing system enables you to pre-program (2) different dosing levels. It includes water temperature monitoring, soak timer and "Check Detergent Supply" alarm when detergent supply is empty..

ELECTRICAL AND PLUMBING

The sink unit is completely pre-wired to an integral breaker box with a 6-foot hospital grade plug as well as pre-piped to NPT valves for final water connections.

Installation and Assembly

TBJ work sinks are shipped fully assembled, for quick and easy setup. Standard and optional fixtures are shipped installed and ready for use after installation of the sink. Fixtures are pre-piped ready for connection to in-house utilities on site.

WORK SINK OPTIONS



Push-Button
Height Adjustment



Selecta Air &
Water Pistols



Etched Gallon
Markings



Integrated Scope Buddy™
Plus Flushing Aid



Hot/Cold spray rinse
Faucet combination



Custom Sink Bowl Sizes



Built-in Cabinets
and Drawers



Custom back-splashes and
Side-splashes



Full width under shelf

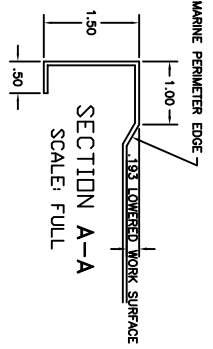
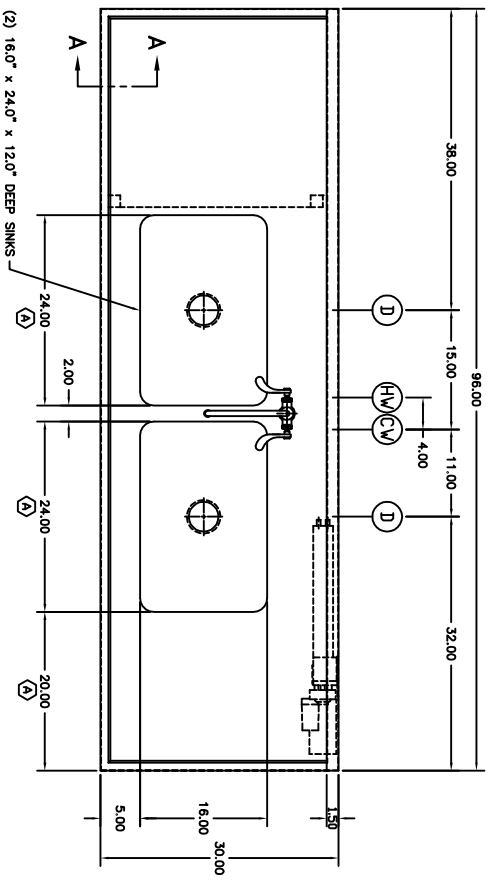


DI and RO water

ADDITIONAL OPTIONS NOT SHOWN: Automatic push-button sink filling, Overhead canopy with LED lighting and storage bins, LED task lighting, Water temperature monitoring, Programmable enzymatic dosing, Integrated leak testing.

UTILITY REQUIREMENTS

- (CW) COLD WATER - 1/2" N.P.T. (FLEX LINE BY OTHERS)
- (HW) HOT WATER - 1/2" N.P.T. (FLEX LINE BY OTHERS)
- (D) DRAIN - (2) 1-1/2" N.P.T.
- (E) ELECTRICAL - 115 V, 1 PH, 60 HZ, 15 AMP
(FOR 3-PRONG GROUNDED PLUG)

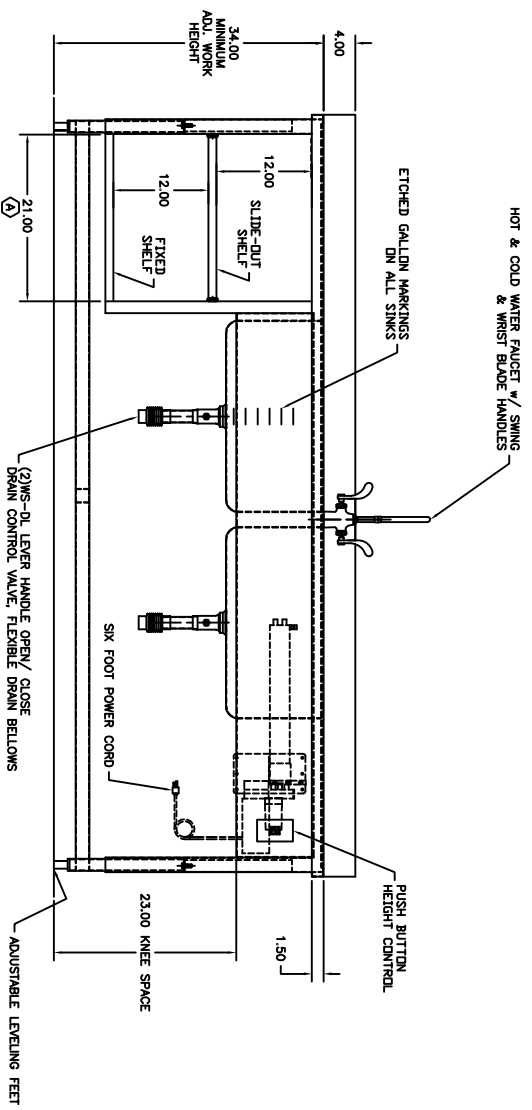


FOR APPROVAL ONLY

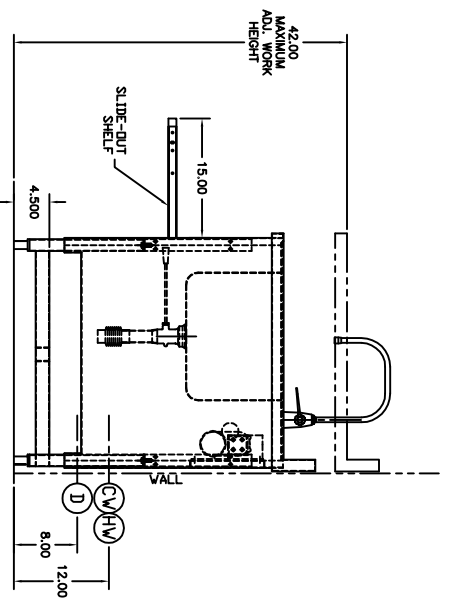
ONE (1) SET OF APPROVAL PRINTS MUST BE SIGNED AND RETURNED TO TRJ INC. BEFORE EQUIPMENT CAN BE RELEASED FOR PRODUCTION

APPROVED AS DRAWN
 FOR FABRICATION
 NOT APPROVED - REVISE & RESUBMIT FOR FINAL APPROVAL

SIGNED _____
 DATE _____



NOTES: 1) MAX. OVERALL DIMENSIONS MUST BE CONSIDERED FOR BUILDING ENTRY.



UNLESS OTHERWISE SPECIFIED		DATE	BY
LET	REVISION	DATE	BY
TRJ INCORPORATED 1400 BIRCHWOOD PA Phone: (717) 261-9700 www.trjinc.com SCALE: 1/2"=1'-0" REF: DWG - REVIS DRAWN BY: BAB DATE: 7-16-13 MODEL: 30-96-2B WS-44 WORK SINK APPROVAL: _____ REVIEWED BY: _____ DATE: _____ Dwg. Appr. _____			
ROUGH-IN ASSEMBLY		R13106	